



# 12<sup>th</sup> Cooperative course Polytrauma Management -beyond ATLS-

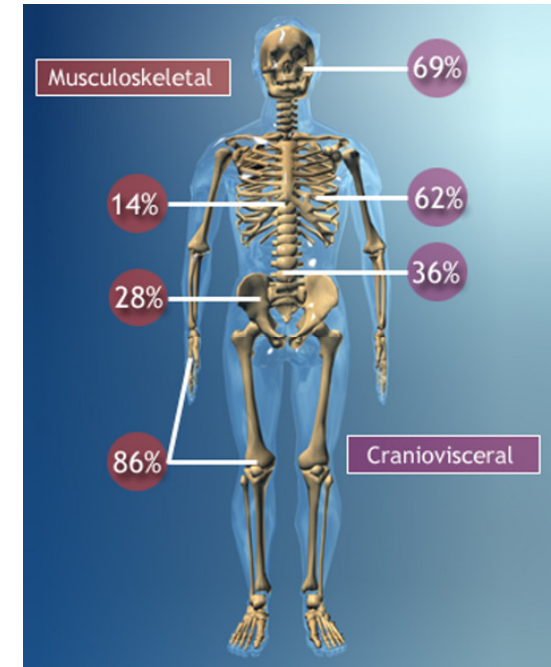
University Hospital Aachen  
30.11. / 01.12.2012

### Chairmen

Prof. Dr. H.-C. Pape (Aachen, GER)  
Prof. Dr. P. Giannoudis (Leeds, GB)  
Prof. Dr. C. Krettek (Hannover, GER)  
Prof. Dr. A. Peitzman (Pittsburgh, USA)

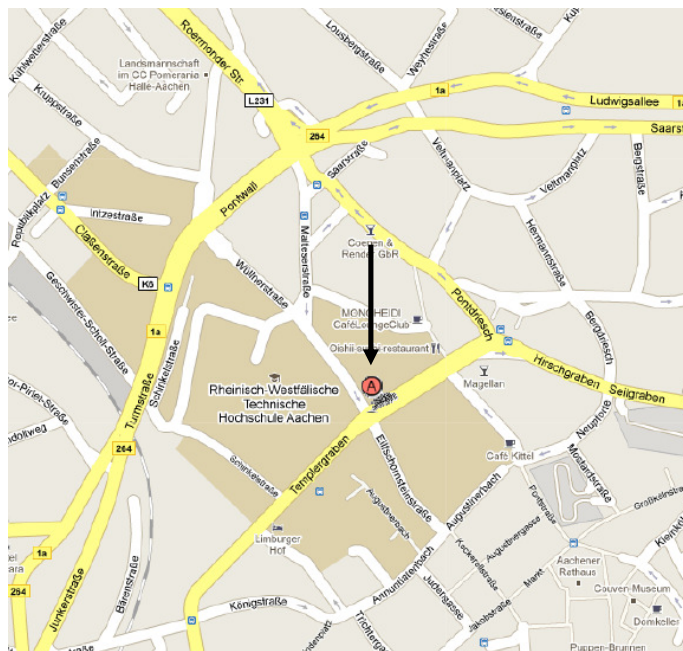
### Organization

Priv.-Doz. Dr. P. Kobbe (Aachen, GER)  
Dr. R. Pfeifer (Aachen, GER)



## Course location

Convention Center „Super C“  
Templergraben 57  
52064 Aachen  
Germany



### In cooperation with:



**Aachen University Medical Center**  
Department of Orthopaedic Trauma (Director: H.-C. Pape, FACS)

In Cooperation with:  
St. James's University Hospital, Leeds, UK, P.Giannoudis, FRCS  
Med. Hochschule Hannover, Germany, C.Krettek FRACS  
University of Pittsburgh Med. Ctr., USA, A.Peitzman, FACS

**Friday 30th November**

<b>08:30 – 09:00</b>	<b>Registration</b>
<b>09:00 – 09:30</b>	<b>Introduction</b>
<b>09:30 – 09:45</b>	<b>Boundless Trauma care in Europe: Letter of intent</b>
<b>09:45 – 11:15</b>	<b>Session 1 <i>General considerations</i></b>
09:45 – 10:00	The German Trauma Network: A nation wide initiative for interhospital cooperation
10:00 – 10:15	The pathophysiology of ARDS: The hyperinflammation hypothesis revisited
10:15 – 10:30	Principles of ATLS and influence on the quality of trauma care
10:30 – 10:45	Trauma Mortality: Has anything changed?
10:45 – 11:00	Telemedicine: From Rescue to Rehabilitation
11:00 – 11:15	Influence of Advanced Pedestrian Protection Systems on the Injury Parameters of a Pedestrian Dummy
<b>11:15 – 11:30</b>	<b>Coffee Break and Industry</b>
<b>11:30 – 13:00</b>	<b>Session 2 <i>What is new in polytrauma care?</i></b>
11:30 – 12:00	Interobserver Polytrauma classification: Practical exercise
12:00 – 12:15	Update: State of the art diagnostics in polytrauma patients
12:15 – 12:30	Volume and coagulation therapy
12:30 – 12:45	Lessons learned in Afghanistan: Can we adopt military experiences to the civilian setting?
12:45 – 13:00	Multiple rib fractures in blunt trauma: Indications for internal fixation
<b>13:00 – 14:00</b>	<b>Lunch and Industry</b>
<b>14:00 – 15:00</b>	<b>Session 3 <i>Emergency interventions I (Live cadaver demonstrations)</i></b>
14:00 – 14:15	Cranial decompression
14:15 – 14:30	Emergency thoracotomy
14:30 – 14:45	Abdominal packing
14:45 – 15:00	Pelvic Packing
<b>15:00 – 15:45</b>	<b>Session 4 <i>Emergency interventions II</i></b>
15:00 – 15:15	Damage control orthopedics: Quo vadis?
15:15 – 15:30	Stabilization of hemodynamically instable patients with pelvic injuries
15:30 – 15:45	Management of spinopelvic dissociation
<b>15:45 – 16:00</b>	<b>Coffee Break and Industry</b>
<b>16:00 – 17:30</b>	<b>Session 5 <i>German chapter of ER, ICU, and Polytrauma Care (NIS)</i></b>
16:00 – 16:15	Hypothermia and trauma: results from a multicenter animal study
16:15 – 16:30	ICU therapy: Has anything changed in strategies for ventilation, organ failure, and sepsis?
16:30 – 16:45	“Scoop and run” or “Stay and Play”?
16:45 – 17:30	Interdisciplinary Cases from the NIS
<b>17:30 – 19:00</b>	<b>Skills Lab I (change after 45 min.)</b>
	<b>Group I: Skills lab Stabilization flail chest</b>
	<b>Group II: Fireside Case discussion</b>

**Saturday 01st December**

<b>08:00 – 08:45</b>	<b>Session 6 <i>The International Working Group on Polytrauma</i></b>
08:00 – 08:15	Interobserver differences in the classification of polytraumatized patients
08:15 – 08:30	Critical injured versus Polytrauma
08:30 – 08:45	New classification of the polytraumatized patient
<b>08:45 – 09:00</b>	<b>Harald Tscherne Teaching Award Polytrauma Course Travel Award</b>
<b>09:00 – 10:15</b>	<b>Session 7 <i>Trauma Emergencies/Urgencies</i></b>
09:00 – 09:15	Vascular injuries
09:15 – 09:30	The General Surgeon's Damage Control: Packing, resection, or embolization?
09:30 – 09:45	Is primary care feasible in open long bone fractures?
09:45 – 10:00	Compartment syndrome
10:00 – 10:15	Foot injuries in polytraumatized patients
<b>10:15 – 10:30</b>	<b>Coffee Break and Industry</b>
<b>10:30 – 11:15</b>	<b>Session 8 <i>Pelvis and Spine trauma</i></b>
10:30 – 10:45	Value of navigation in spine and pelvic trauma
10:45 – 11:00	Minimal invasive anterior internal fixator for pelvic injuries
11:00 – 11:15	Concepts for emergency stabilization of cervical spine injuries
<b>11:15 – 12:45</b>	<b>Skills Lab II (change after 45 min.)</b>
	<b>Group I: Pelvic Clamp</b>
	<b>Group II: Minimal invasive anterior internal fixation</b>
<b>12:45 – 14:00</b>	<b>Lunch and Industry</b>
<b>14:00 – 14:45</b>	<b>Session 9 <i>Polytrauma in special age groups</i></b>
14:00 – 14:15	Traffic related injuries in different age groups
14:15 – 14:30	Polytrauma in children
14:30 – 14:45	Polytrauma in the elderly
<b>14:45 – 16:00</b>	<b>Session 10 <i>Reconstruction and Outcome</i></b>
14:45 – 15:00	Microsurgical flaps
15:00 – 15:15	Management of severe bone defects
15:15 – 15:30	Amputation versus reconstruction
15:30 – 16:00	Patient report

**Registration fee:**

250 € for Consultants  
200 € for Residents  
100 € for ESTES members

**National registration please transfer to:**

Universitätsklinikum Aachen  
Sparkasse Aachen  
BLZ: 390 500 00  
Kontonummer: 1300 4015  
Überweisungszweck: 373131

**International registration please transfer to:**

Account Holder: Universitätsklinikum Aachen  
Bank: Sparkasse Aachen  
IBAN: DE27 3905 0000 0013 0040 15  
Bic: AACSD33  
Reason for payment: 373131

Please register with Dr. Roman Pfeifer

[rpfeifer@ukaachen.de](mailto:rpfeifer@ukaachen.de)

University of Aachen Medical Center  
Department of Orthopaedic Trauma  
Pauwelsstr. 30  
52074 Aachen, Germany.  
Phone: (0049)-241-80 37041  
Fax: (0049)-241-80 82415

**Please note:** Registration is not complete until you receive the confirmation email for your registration. If you do not receive this letter within 5-7 days of registration, please contact us at (0049)-241-80 37041 or at [rpfeifer@ukaachen.de](mailto:rpfeifer@ukaachen.de)

For additional information visit us on

[www.polytraumacourse.com](http://www.polytraumacourse.com)

**CME Points:** Accreditation in process.